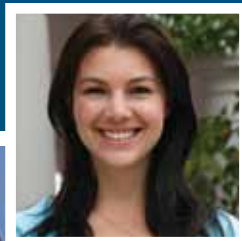


EMPLOYMENT REPORT

Classes of 2009 & 2010





EMPLOYMENT REPORT

Darden is pleased to present employment statistics for the classes of 2009 and 2010. Additional in-depth employment data can also be found at www.darden.virginia.edu.

As we strive to be the first school that companies consider for recruiting top talent, the Career Development Center is committed to helping you achieve your goals for hiring MBAs.

Please let us know how we can help meet your needs.

Sincerely,

Jack

Jack Oakes, Darden '89
 Director, Darden Career Development Center
 (434) 924-7686

For more information, please contact the CDC at (434) 924-7283, email careerdevelopment@darden.virginia.edu, or visit our website at www.darden.virginia.edu/career.



Class Profile

Enrolled	336
Women	31%
Men	70%
Minority Students	12%
Asian, Alaskan, or Pacific Islander	5%
Black/African American	4%
Hispanic	3%
Native American	0%
International	34%
Countries Represented	34
Average Age at Entry	28
Work Experience	100%

GMAT DISTRIBUTION

Under 600	2%
600-650	22%
660-690	26%
700-750	42%
Above 750	7%
Median	690
Mean	688

GPA DISTRIBUTION

Not Calculated	31%
Less than 2.5	1%
2.5-2.99	8%
3.0-3.49	37%
3.5-4.0	22%
Mean	3.33

DISTRIBUTION

Mid-Atlantic	46%
Midwest	8%
Northeast	22%
South	8%
Southwest	6%
West	9%

UNDERGRADUATE MAJOR

Business Administration	26%
Economics	13%
Engineering/Science/Math	33%
Humanities/Social Science	22%
Other	7%

Employment by Compensation and Location

Region	Percentage	Average Base Salary	Median Base Salary
International	10	\$94,217	\$99,500
Mid-Atlantic	29	105,543	100,000
Midwest	10	104,864	97,000
Northeast	27	103,219	95,000
South	9	99,619	95,000
Southwest	7	104,967	109,500
West	8	108,722	104,000
TOTAL	100	\$102,903	\$100,000

MBA RANKINGS

- Ranked **#9** in *Forbes*
(Forbes measures the graduates' return on investment)
- Ranked **#10** in *Wall Street Journal*
(Wall Street Journal is a corporate recruiter based poll)
- Ranked **#12** in U.S. in the *Economist*
(School submits statistical data and students and alumni rate their MBA experience)
- Ranked **#14** in *U.S. News & World Report*
(Poll evaluates student selectivity and placement data and gathers the perceptions of deans and program directors to develop the ranking)
- Ranked **#14** in *Financial Times*
(The Financial Times poll measures career progression of alumni, program diversity and a school's track record in producing new ideas in management)
- Ranked **#16** in *Business Week*
(Business Week surveys students and corporate recruiters and measures intellectual capital)

Number of Graduates Seeking Employment

	Total Graduates Seeking Employment	First Offer By Graduation	Accept By Graduation	First Offer Between Graduation and 3 Months Out	Accept Between Graduation and 3 Months Out
	Number	Percentage	Percentage	Percentage	Percentage
U.S. Citizens/Permanent Residents	200	82.5	77.7	4.0	4.0
Foreign Nationals	94	66.0	61.7	5.3	6.4
TOTAL GRADUATES	294	77.2	72.6	4.4	4.7

Compensation by Industry

Industry	Percentage	Average Base Salary	Average Signing Bonus	Median Base Salary	Median Signing Bonus
Consulting	31	\$115,525	\$20,922	\$120,000	\$20,000
Consumer Products	11	93,460	22,308	95,000	20,000
Education/NFP	1	N/A	N/A	N/A	N/A
Energy	3	94,143	16,250	104,000	17,500
High Tech/Telecom	4	100,000	33,750	104,000	40,000
Investment Banking	17	97,949	40,122	95,000	40,000
Investment Mgmt/Portfolio Mgmt	1	N/A	N/A	N/A	N/A
Manufacturing	11	102,005	21,445	100,000	20,000
Media/Entertain/Communication	2	N/A	N/A	N/A	N/A
Other Financial Services	5	100,278	18,750	100,000	15,000
Other Services	3	139,125	12,500	160,000	12,500
Pharma/Biotech/Healthcare	4	96,002	16,250	98,504	16,250
Real Estate/Construction	1	N/A	N/A	N/A	N/A
Retail	4	82,375	20,000	90,000	20,000
Venture Cap/Private Equity	2	111,250	N/A	117,500	N/A
TOTAL	100	\$102,903	\$25,048	\$100,000	\$20,000

Class of 2009: Statistics for full-time positions received during the year 2008-2009 reported in U.S. dollar equivalents and based on data provided by students. Data is complete as of September 30, 2009.

Base Salary: Figures based on reported job acceptances not including bonuses, overtime, or any other forms of compensation.



Compensation by Job Function

Job Function	Percentage	Average Base Salary	Average Signing Bonus
Business Development	4	\$75,852	\$17,000
Consulting	31	115,182	20,922
Corporate Finance	5	91,250	27,000
Executive Development/Leadership Program	9	100,400	21,305
Financial Analyst	6	98,539	19,091
General Management	6	94,159	18,333
Investment Banking	8	96,176	40,265
Investment/Portfolio Mgmt	5	113,636	38,182
Marketing	13	93,950	22,753
Miscellaneous	4	N/A	N/A
Other Financial Services	9	98,553	34,545
TOTAL	100	\$102,903	\$25,048

Class of 2009: Statistics for full-time positions received during the year 2008-2009 reported in U.S. dollar equivalents and based on data provided by students. Data is complete as of September 30, 2009.

Base Salary: Figures based on reported job acceptances not including bonuses, overtime, or any other forms of compensation.

Accepted Job Offers Source

Source	Percentage of Jobs
All School-Facilitated Activities (including internships)	77
All Student-Facilitated Activities (including internships)	23
TOTAL	100

School Facilitated	Percentage of Jobs
Darden-Facilitated Summer Internship	53
On-Grounds SY Invited Interview	25
On-Grounds SY Bid Interview	10
On-Grounds Company Briefing	4
Faculty/Alumni/Student	4
Job Posting	4
TOTAL	100



MBA SPECIALTY RANKINGS

- *Princeton Review:* Ranked Darden's Professors **#2** teaching faculty in the United States.
- *BusinessWeek:* Ranked in **top 10** MBA programs for Finance, General Management, Analytical Skills, Communication Skills and Career Services.
- *Wall Street Journal:* Ranked **#7** for recruiting MBAs with high ethical standards and **#10** for schools that recruiters consider best for practical learning.
- *Financial Times:* Ranked **#2** in the world in General Management, **#10** in the world for Corporate Social Responsibility and **#7** for top salaries in Consulting.

Class Profile

Enrolled	333
Women	29%
Men	71%
Minority Students	15%
Asian, Alaskan, or Pacific Islander	6%
Black/African American	4%
Hispanic	5%
Native American	0%
International	30%
Countries Represented	35
Average Age at Entry	28
Work Experience	100%

GMAT DISTRIBUTION

Under 600	3%
600-650	15%
660-690	27%
700-750	48%
Above 750	7%
Median	700
Mean	693

GPA DISTRIBUTION

Not Calculated	30%
Less than 2.5	1%
2.5-2.99	8%
3.0-3.49	37%
3.5-4.0	25%
Mean	3.35

DISTRIBUTION

Mid-Atlantic	45%
Midwest	7%
Northeast	25%
South	12%
Southwest	4%
West	6%

UNDERGRADUATE MAJOR

Business Administration	24%
Economics	15%
Engineering/Science/Math	34%
Humanities/Social Science	23%
Other	4%



Employment by Salary & Location

Region	Percentage	Average Weekly Income
International	7	\$1,068
Mid-Atlantic	33	1,120
Midwest	8	1,610
Northeast	25	1,677
South	12	1,558
Southwest	5	1,466
West	10	1,718
TOTAL	100	\$1,434

Internship Compensation by Job Function

Job Function	Class Percentage	Average Weekly Income	Median Weekly Income
Consulting	13	\$1,795	2,000
Corporate Finance	16	1,408	1,442
Investment Banking	9	1,758	1,827
Investment Management	5	1,040	750
Other Financial Services	10	1,193	1,300
Total Finance	40	1,423	1,650
GM/Leadership Dev Program	29	1,314	1,433
Marketing	16	1,423	1,558
Miscellaneous	2	1,246	850
TOTAL	100	\$1,434	\$1,563

Class of 2010: Statistics for internship positions received during the 2008-2009 academic year, reported in U.S. dollar equivalents and based on data provided by students. Data is complete as of September 30, 2009.

Base Salary: Figures based on reported acceptances not including bonuses, overtime, or any other forms of compensation.





Contacting Us

Mailing Address

Career Development Center
University of Virginia
Darden Graduate School of Business Administration
P.O. Box 6550
Charlottesville, VA 22906-6550

Shipping Address

Career Development Center
University of Virginia
Darden Graduate School of Business Administration
100 Darden Boulevard
Charlottesville, VA 22903-1760

Telephone

Career Development Center 434-924-7283
Career Development Center Fax 434-924-7363
Darden School General Information 434-924-3900

Email

CareerDevelopment@darden.virginia.edu

Online

www.darden.virginia.edu/career

